
Tulare Regional Medical Center – Evolutions Fitness & Wellness Center

December 4, 2018

Ashu Jain, P.E., Senior Manager

Jeff Woldhuis, P.E., Lead Project Manager

Carl Klinck, Project Engineer



Agenda

- Introduction to ENGIE Services U.S.
- Case Studies of ENGIE Services Partnerships
- Program Scope and Financials
- Program Benefits
- Next Steps



ENGIE

ENGIE Services U.S.

ENGIE is the largest independent electricity producer in the world, and the third largest retail electricity supplier in the United States. With more than 150,000 employees worldwide, ENGIE generates over \$80 billion in annual revenue.

44 years

Experience as an Accredited
Energy Service Provider

\$300MM

Sales in 2017

\$2.5B

Completed Projects

250MW+

Solar Projects for CA Public Entities

400+

Employees

Energy Projects in the Central Valley

• Alpaugh Unified School District	\$1.7 million
• City of Lemoore Phases 1 - 3	\$17.5 million
• City of Delano	\$3.4 million
• City of Dinuba Phases 1 - 2	\$12.1 million
• City of Hanford Phases 1 - 2	\$14.3 million
• County of Kings Phases 1 - 4	\$27.4 million
• County of Madera Phases 1 - 2	\$16.5 million
• County of Merced	\$11.7 million
• County of Tulare Phases 1 - 2	\$34.5 million
• Escalon Unified School District	\$6.9 million
• Fresno State University	\$12.0 million
• Lemoore Union High School District	\$3.0 million
• State Center Community College District, Fresno	\$2.5 million
• Selma-Kingsburg-Fowler County Sanitation District	\$9.8 million
• Wasco Union Elementary School District	\$4.4 million

California State University, Fresno

Project Highlights

- Clean, renewable energy meets 20% of annual electrical demand
- Guaranteed power and pricing structure for 20-year term
- Installed four electronic information kiosks, enabling students and others to view web-based, real-time data and graphical displays from the PV system

\$13MM

in utility cost reduction over the life of the PV system

1.2 MW solar PV solar system covering more than 700 parking spaces

Kings County

PROJECT HIGHLIGHTS

- Awarded a total of \$1.3MM in incentives from Southern California Edison-administered programs for all phases of work
- Reduces CO₂ emissions by 7,700 metric tons annually, equivalent to removing 1,650 cars from the road

\$43MM

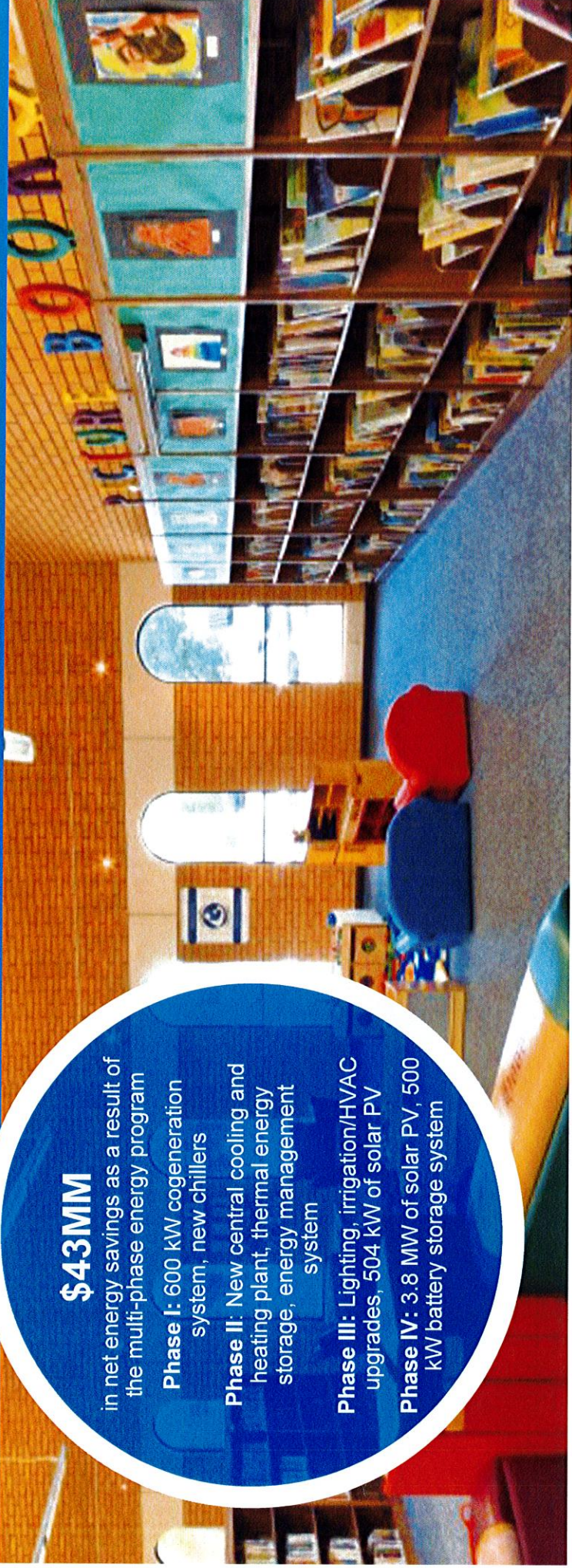
in net energy savings as a result of the multi-phase energy program

Phase I: 600 kW cogeneration system, new chillers

Phase II: New central cooling and heating plant, thermal energy storage, energy management system

Phase III: Lighting, irrigation/HVAC upgrades, 504 kW of solar PV

Phase IV: 3.8 MW of solar PV, 500 kW battery storage system



Madera County

PROJECT HIGHLIGHTS

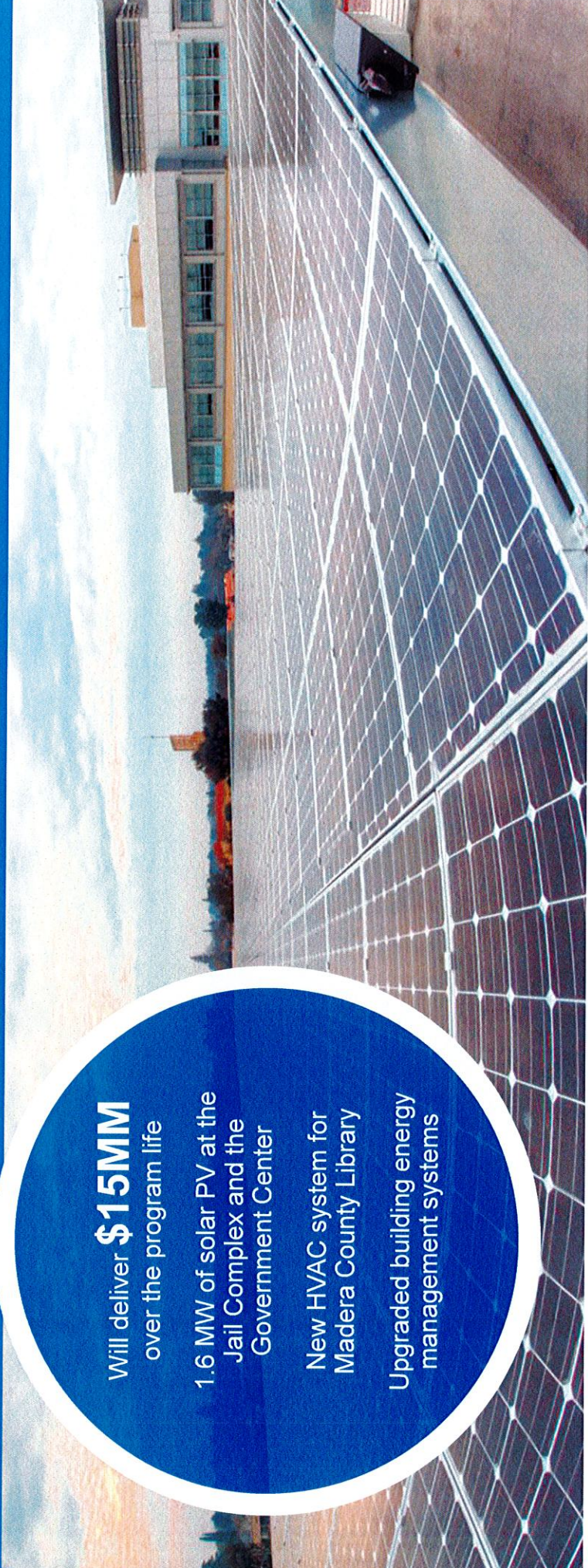
- Reduces impact of utility rate hikes by cutting electricity bills by nearly 50% for affected facilities
- Utilizes savings to replace 40-year old mechanical systems at the Library
- Avoids 2,230 metric tons of carbon emissions per year, equivalent to annual emissions from 469 cars

Will deliver **\$15MM** over the program life

1.6 MW of solar PV at the Jail Complex and the Government Center

New HVAC system for Madera County Library

Upgraded building energy management systems



Merced County

PROJECT HIGHLIGHTS

- Expected to reduce County electricity spending by over 50%
- Expected to capture more than \$118,000 in incentives in the first year of the program
- Expected to reduce carbon emissions equivalent to removing 750 cars from highways annually

\$19MM

in net savings over the program life

1.88 MW of solar at two sites

LED retrofits of 2,828 County-owned streetlights

Indoor/outdoor LED lighting retrofits at nine sites

HVAC upgrades at six sites

Plumbing efficiency upgrades/controls at two sites

Rendering of solar shade parking canopies at the Administration Building. Program implementation began in February 2017.

Tulare County Phase 1

PROGRAM HIGHLIGHTS

- Self funding
- Guaranteed cost and savings
- Turnkey project and construction management
- Improved efficiency
- Enhanced indoor environments
- Efficient use of taxpayer dollars

PROJECT SCOPE

- High-efficiency lighting systems
- Bob Wiley Detention Facility ventilation upgrade
- Pre-Trial Facility ventilation upgrade
- Energy management system
- Electrical metering consolidation
- Equipment and controls at the waste water treatment plant



Tulare County Phase 2

PROJECT HIGHLIGHTS

- Expected to reduce County electricity spending by two-thirds
- Expected to reduce carbon emissions equivalent to removing 2,700 cars from highways annually

- \$40 million in net savings over the program life
- 9.2 MW of solar at nine sites
- 2.0 MWh of battery energy storage systems at three sites
- Parking lot improvement at one site
- 25-year PPA at 0% escalation



City of Lemoore

PROJECT HIGHLIGHTS

- Avoids 4,616 metric tons of carbon emissions per year, equivalent to annual emissions from 972 cars
- ENGIE helped the City manage new opportunity streams to obtain grants and incentives

\$49MM

in net savings over the program life

3.2 MW of solar PV

1,200 LED streetlight retrofits

Wastewater circulation system and weather-based irrigation system

Major HVAC and electrical infrastructure upgrades